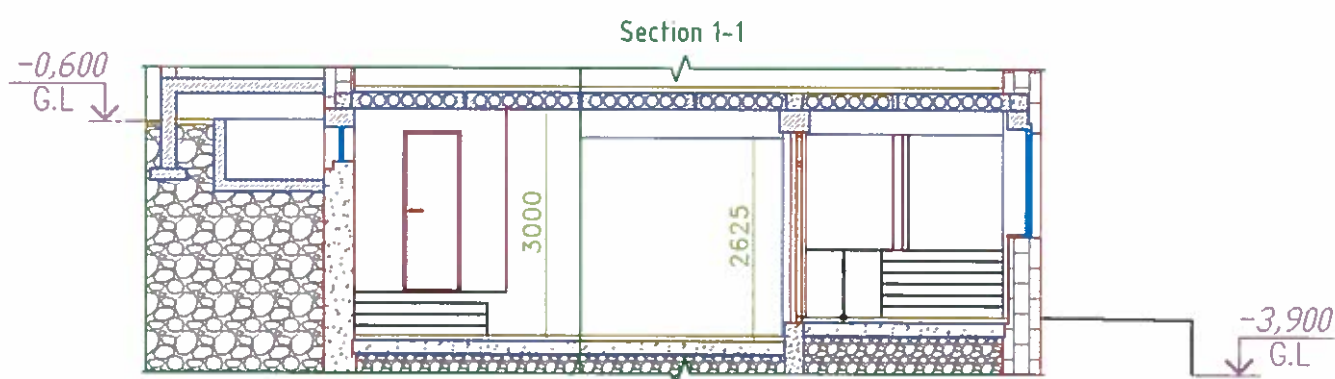
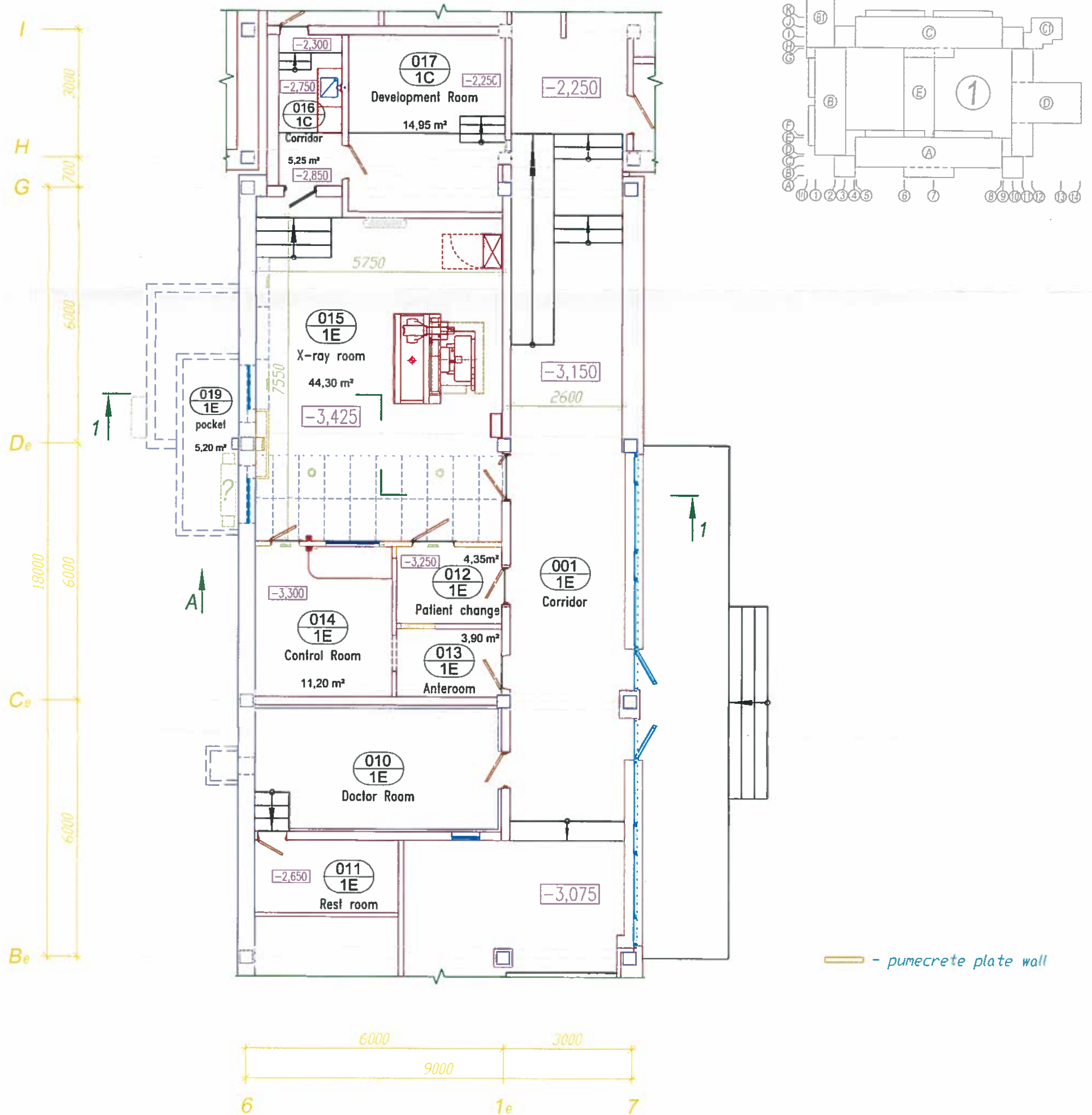


Fragment of NMMC-1E Adaptation for X-ray

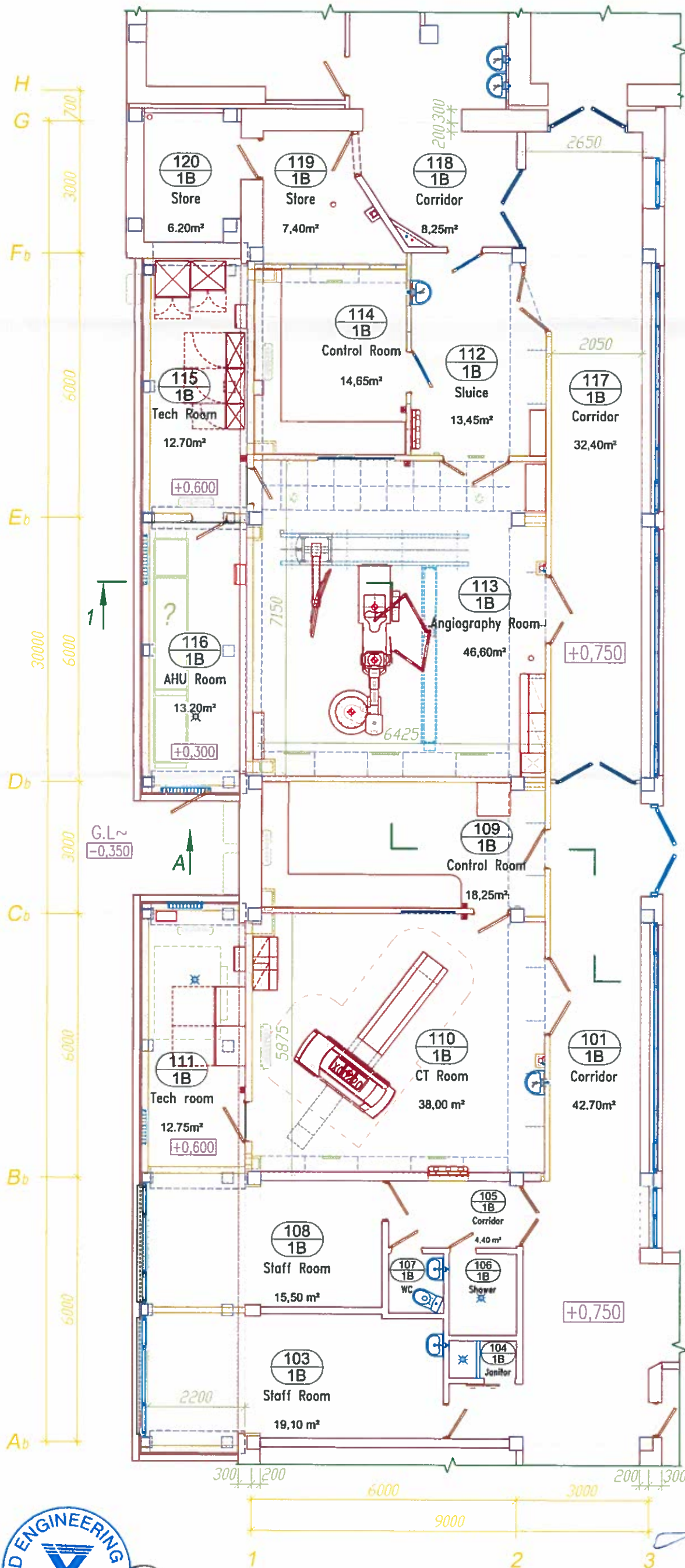
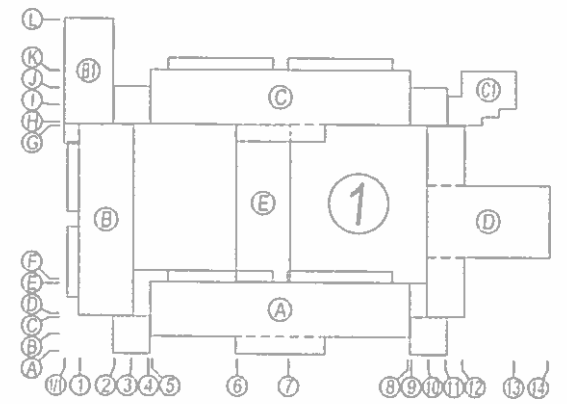


23.11.2016



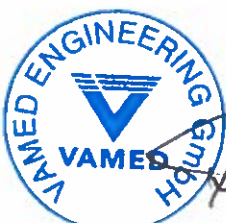
Layout approved
by the Ministry of Health of the Republic of Armenia

Fragment of NMMC-1B Adaptation for Angio and CT



- pumecrete block wall
- pumecrete plate wall
- gypsum plasterboard wall

Layout approved
Kooper Zohra byan K.L.



23.11.2016

